



lab WORKS

International Inc.

LABTECH ECO-SERIES

**ONLY 540 WATTS POWER
CONSUMPTION**



Office: 416-977-5477

Fax: 416-977-5477

Service: 888-890-3334



admin@labworksinternational.com

Service@labworksinternational.com

www.labworksinternational.com



Labworks International HQ
595 Cityview Blvd Unit 11
Woodbridge, ON, L4H 3M7

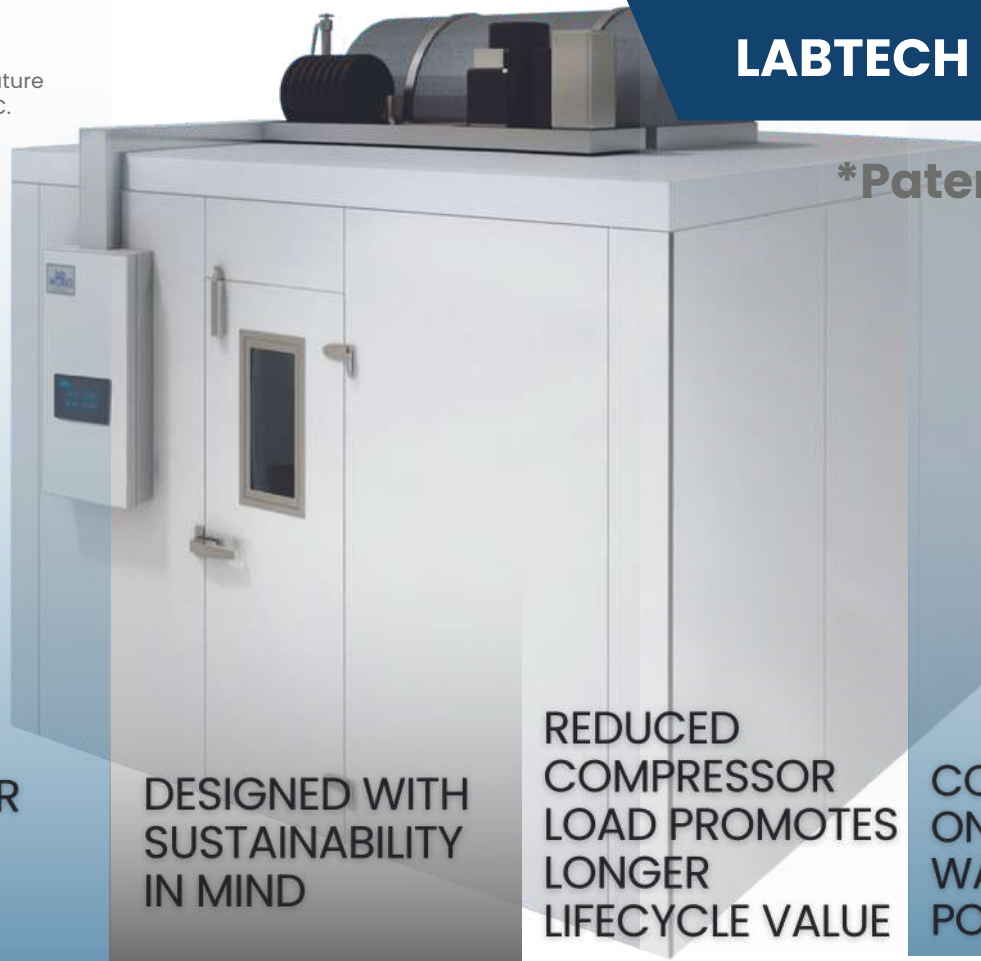
Labworks International USA
1415 Panther Lane, Suite 378
Naples, FL, 34109



Universal Temperature
Range of 4C to 37C.

LABTECH ECO SERIES

***Patent Pending**



**50% ENERGY
SAVINGS OVER
TRADITIONAL
SYSTEMS**

**DESIGNED WITH
SUSTAINABILITY
IN MIND**

**REDUCED
COMPRESSOR
LOAD PROMOTES
LONGER
LIFECYCLE VALUE**

**CONSUMES
ONLY 540
WATTS OF
POWER**

Evaporators and drain lines are eliminated from within the environmental room. All of the service for the Labtech prepackaged unit is external to the room eliminating contamination risks and unnecessary temperature excursions.

CONTINUOUS AIR CIRCULATION PROMOTES TEMPERATURE UNIFORMITY PERFORMANCE



Dual incubator and
cooling mode.



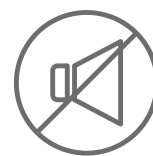
Modular approach
enables the
equipment to be
redeployed after room
modifications or
relocation.



Eliminates expensive
field refrigeration
piping.



100% Usable room
volume.



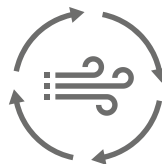
Quiet and compact
prepackaged unit; that
is fully tested, charged,
and operational
before delivery to site.



Optional fully coated
cooling coils for
anticorrosion and
maximum lifecycle.



Modular prepackaged
FAT cooling heating unit
with variable speed
evaporator fans and a
variable speed
compressor resulting in
50% energy savings over
traditional system
designs.



Very small refrigerant
charge using R448. It
ensures clients have a
future proofed system
that only requires a 6lb
charge of refrigerant.
This eliminates the need for
a larger refrigerant charge and
potential leak risk.



All units are North American
made ensuring
replacement parts are
always available.

WHY VARIABLE SPEED?



Longer Life Cycle

Compressor life cycle is increased due to reduced compression stresses.

Quick Response To Changes

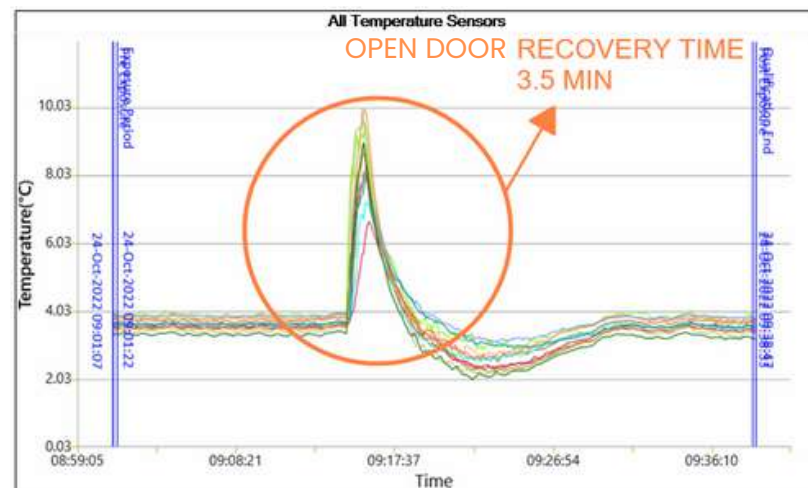
The variable speed compressor and variable frequency drive, enables extremely responsive changes in capacity control based on real-time cooling loads. The Labtech ECO controls temperature uniformity throughout the room and produces mapping results superior to the outdated, and ineffective egg-crate ceiling grid system.

Improved Thermal Stability

The Labtech supply and return air grill system and air delivery system provides excellent thermal stability within the environmental room.

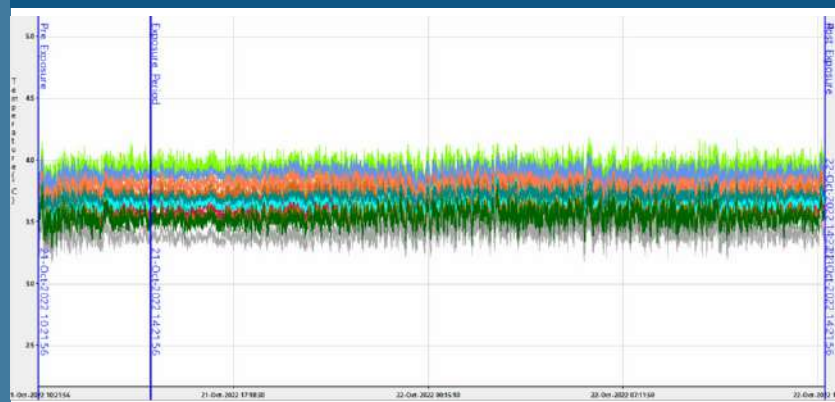
Preventing Failures with Variable Refrigerant Flow

The variable speed compressor adjusts the refrigerant flow in response to the room's cooling load rather than turning hot gas bypass valves on and off. The traditional method of rapidly alternating the hot gas by pass valves can lead to premature failure by valves sticking in open positions and causing immediate room failure.



Open Door Recovery

Superior room temperature recovery as the system obtains an extra boost of cooling during rapid pulldown. The Labtech's EC Motor evaporator fans and variable speed compressor automatically respond to a spike in cooling load due to door openings and can recover within 3.5 minutes.



WHY PREPACKAGED PENTHOUSE UNIT?

Quiet and compact prepackaged unit; that is fully tested, charged, and operational before delivery to site.

Eliminates the need for cosmetic egg crate ceiling which produces no net benefit.

Prepackaged modular approach eliminates field refrigeration piping

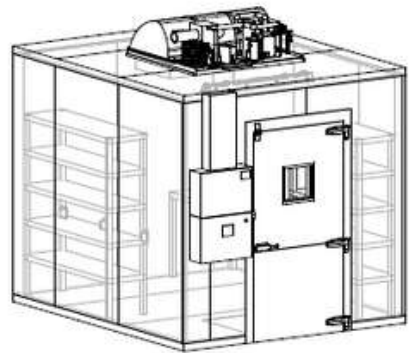
The prepackaged Labtech system can be installed with a room shell and have an operational environmental room all within one day.

Our unique prepackaged unit provides 100% usable volume within the room.

Labtech creates a secure environment. All service and maintenance is exterior to the room so that the stored, valuable product is untouched and undisturbed.



One Of A Kind Prepackaged Penthouse Style Labtech, patent pending.



Labtech's compact, pre-manufactured design is the only system that can be fully factory acceptance tested prior to delivery. All other traditional systems need to be assembled in place on site, resulting in increased risk of refrigerant piping leaks and electrical wiring mistakes.

COMPETITIVE DIFFERENTIATORS



Fig. 1: Competitor's evaporator with finish damage from condensation.



Fig. 2: Competitor's environmental room with damaged and dirty egg crate ceiling.

OUTDATED ENVIRONMENTAL CHAMBER DESIGN

Market Competitors utilize a ceiling-mounted cooling coil positioned behind an egg crate ceiling grid system. When the door opens, this setup tends to become wet as a result of condensation. The cooling coils above the room chill the egg crate ceiling tiles, priming them for condensation and mold growth, resulting in a wet filter.

Traditional designs utilize a constant speed compressor with hot gas bypass control resulting in continuous compressor operation and energy inefficiencies. In addition, these systems tend to be loud. Furthermore, traditional systems require extensive refrigeration piping, insulation, and large refrigerant charges.

LABTECH ECO-SERIES



Fig. 3: LABWORKS Labtech 18-year-old environmental chamber supply and return air grill.

The Labtech ECO-series unit is a prepackaged, modular cooling and heating system designed for controlled environmental rooms. The unit does not require any field refrigeration piping or plumbing.

The Labtech ECO-series utilizes a simple supply and return air grill in the ceiling. Its advanced technology uses variable speed to reduce energy usage, provide extended compressor life and reduce sound levels.

Labtech typical refrigerant charge = 6lbs



LABWORKS CERTIFIED SERVICE



PREVENTATIVE MAINTENANCE INSPECTION PROGRAM (PMIP)

Labworks Certified PMIP contract ensures your scientific grade environmental room continues to provide precise and reliable operation. Factory trained technicians perform preventative maintenance on serviceable components, as well as complete inspection of the chamber, mechanical equipment, electrical equipment and controls. Included in the inspection is a calibration of the temperature and humidity sensors on an annual basis. Emergency service and repairs are completed at a preferred customer rate during the length of contract.



COMPREHENSIVE SERVICE PROGRAM (CSP)

Labworks Certified CSP contract provides the best value and cost certainty for your Labworks environmental room. Under the CSP program, Labworks provides quarterly service, annual calibration, emergency calls, and parts replacement at no additional cost. Software updates, where applicable, are included for the controller software and off-site emergency back-up software is included. Your environmental room is consistently maintained with no surprise bills.

24/hr, 7 day per week service response;
Guaranteed 4 hour response. 24 hour onsite for emergency calls;
Access to all service records and calibration certificates;
Labworks 'next day' inventory for most common parts;
On-line access to service manuals;
Labworks University online learning channel for training videos and applications;
Preferred rates for system/component upgrades;
Preferred discounts for additional Labworks products.

LABTECH ECO





lab WORKS

International Inc.

LABTECH ECO-SERIES



Office: 416-977-5477

Fax: 416-977-5477

Service: 888-890-3334



admin@labworksinternational.com

Service@labworksinternational.com

www.labworksinternational.com



Labworks International HQ
595 Cityview Blvd Unit 11
Woodbridge, ON, L4H 3M7

Labworks International USA
1415 Panther Lane, Suite 378
Naples, FL, 34109